

2010

**Abstract of Assessment**

PARCELS AVERAGE  
OR ACRES PER ACREAL PROPERTY

**Residential**

Assessment rate 7.96%

1,667	Improved Land	\$ 484,454
	Improvements	\$ 5,447,785
224	Mobile Homes	\$ 141,347
43	Ag Mobile Homes	\$ 26,042
388	Ag Residences	\$ 1,699,140

Assessment rate 29%

469	Vacant Land	\$ 375,546
<b>TOTAL RESIDENTIAL</b>		<b>\$ 8,174,314</b>

**Commercial**

Assessment rate 29%

24	Vacant Land	\$ 49,602
	Improved Land	\$ 390,566
	Improvements	\$ 17,799,610
<b>TOTAL COMMERCIAL</b>		<b>\$ 18,239,778</b>

**Industrial**

Assessment rate 29%

	Improved Land	\$ 15,784
7	Improvements	\$ 196,224
<b>TOTAL INDUSTRIAL</b>		<b>\$ 212,008</b>

**Agricultural**

Assessment rate 29%

60,255	123.04	Irrigated Land	\$ 7,413,733
55,219	14.52	Dry Farm Land	\$ 801,722
689,891	4.44	Grazing Land	\$ 3,061,632
13,423	1.60	Other Lands	\$ 21,509
		Other Ag Land	\$ 49,545
		Farm Support Bldg	\$ 1,062,721
		Other Ag	\$ 3,845,843
		Possessary Intere	\$ 122,513

**TOTAL AGRICULTURAL \$ 16,379,218**

**TOTAL REAL ESTATE & IMPROVEMENTS ASSESSED \$ 43,005,318**

**Natural Resources**

331,470	Severed Minerals	\$ 659,176
35	Producing Oil & G	\$ 769,930
7	Earth & Stone	\$ 17,987
<b>TOTAL NATURAL RESOURCES</b>		<b>\$ 1,447,093</b>

**Personal Property Valuation**

Assessment rate 29%

Commercial Furniture & Equipment	\$ 952,878
Industrial Furniture & Equipment	\$ 46,033
Agricultural Equipment	\$ 69,691
Oil & Gas Equipment	\$ 95,350
Earth or Stone Equipment	\$ 0
<b>TOTAL PERSONAL</b>	<b>\$ 1,163,952</b>

**SUMMARY OF ASSESSED VALUATIONS**

Total Real Estate & Improvements Assessed	\$ 43,005,318
Total Natural Resources Assessed	\$ 1,447,093
Total Personal Property Assessed	\$ 1,163,952
Total Assessed Valuation of Public Utilities	\$ 26,850,000

**GRAND TOTAL**

**TAXABLE ASSESSED VALUATION \$ 72,466,363**

2010

**County General Tax**

FUND	VALUATION	LEVY	REVENUE
General Fund	\$ 72,466,363	22.481	\$ 1,629,116
Road & Bridge	"	3.596	\$ 260,589
Public Welfare	"	3.750	\$ 271,749
Contingent	"	0.000	\$ 0
Airport	"	0.019	\$ 1,377
Retirement	"	0.750	\$ 54,350
Abatement	"	0.014	\$ 1,015
TV Translator	"	0.000	\$ 0

**TOTAL COUNTY**

**LEVY AND REVENUE 30.61 \$ 2,218,196**

2010

**School Tax And Levies By District**

DISTRICT	VALUATION	LEVY	REVENUE
RE - 1	\$ 51,234,826	23.057	\$ 1,181,321
RE - 2	\$ 18,426,028	25.741	\$ 474,304
RE - 13 JT	\$ 2,805,511	25.157	\$ 70,578

**TOTAL VALUATION**

**\$72,466,365**

**TOTAL SCHOOL REVENUE \$ 1,726,203**

**REQUIRED SCHOOL DISTRICT INFORMATION ON SENATE BILL 25**

**FOR GENERAL FUND ONLY**

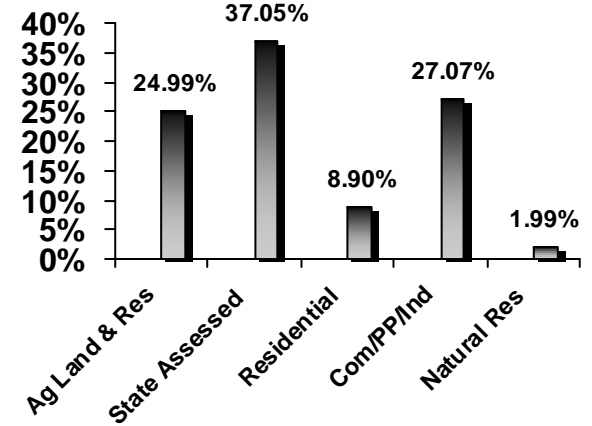
(Mill levy with state revenue available)

RE - 1	23.057	RE - 2	25.741	RE - 13 JT	25.157
(Estimated mill levy, if no state revenue available)					
RE - 1	80.430	RE - 2	138.968	RE - 13 JT	212.711

**2010 CITY TAX**

VALUATION	LEVY	REVENUE	
City of Las Anima	\$ 6,116,437	39.000	\$ 238,541
<b>TOTAL CITY</b>		<b>LEVY AND REVENUE 39.000 \$ 238,541</b>	

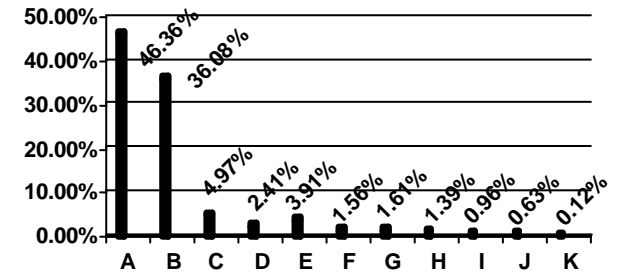
WHERE PROPERTY TAX VALUE COMES FROM



**SPECIAL DISTRICTS**

LA - BC Fire	\$ 42348403	4.415	\$ 186,968
Hasty McClave Fire	\$ 12100133	5.500	\$ 66,551
Wiley Rural Fire	\$ 2773931	2.000	\$ 5,548
LA - BC Library	\$ 51234825	1.500	\$ 76,852
BC-PC Cemetery	\$ 14934087	2.000	\$ 29,868
BC - LA Cemetery	\$ 57532276	2.000	\$ 115,065
Lower Arkansas Valley Water Conservancy	\$ 49817710	1.502	\$ 74,826
Southeastern Colorado Water Conservancy	\$ 48498681	0.947	\$ 45,928
<b>TOTAL SPECIAL DISTRICTS REVENUE</b>			<b>\$ 601,606</b>

**DISTRIBUTION OF PROPERTY TAX REVENUE**



A	Bent county	46.36%
B	Schools	36.08%
C	City of Las Animas	4.97%
D	Bent Las Animas Cemetery	2.41%
E	Las Animas Bent County Fire	3.91%
F	Low er Ark. Valley Water Conservanc	1.56%
G	Las Animas Bent County Library	1.61%
H	Hasty-Mc Clave fire	1.39%
I	Southeastern Water Conservancy	0.96%
J	Bent Prow ers Cemetery	0.63%
K	Wiley Rural Fire	0.12%

## ASSESSMENT INFORMATION

The County Assessor does not set the tax levies. County tax is levied by the Board of County Commissioners. School tax is levied by the School Boards. City tax is levied by the City Officials. Special District tax is levied by their Board of Directors.

After the levies are received by this office, it is the duty of the Assessor to extend the taxes upon property as assessed, and then certify and deliver the tax roll to the County Treasurer for collection according to the law.

All property, except that specifically exempted by law, is subject to taxation, and it is the responsibility of the owner to see that it is listed with the assessor.

If you have questions or problems with your valuation, please come by or call. This office is here to serve you.

Guy Wagner, Bent County Assessor

## TAX INFORMATION

Taxes are due January 1st each year. Make all checks payable to Bent County Treasurer.

Taxes may be paid in full or in two equal payments. The first half payment is due no later than the last day of February. The second half payment is due no later than the 15th day of June. If you pay your taxes in one payment, the total is due no later than the last day of April, and no interest penalty will accrue on any portion of the taxes.

Any tax less than \$25.00 must be paid in full, in one single payment.

Alta Mae Brown, Bent County Treasurer

## BENT COUNTY OFFICERS 2010

Assessor.....Guy Wagner  
 Clerk & Recorder.....Patti Nickell  
 Commissioner-District 1.....William Long  
 Commissioner-District 2.....Tom Wallace  
 Commissioner-District 3.....Lynden Gill  
 Coroner.....David Roberts  
 County Judge.....Mark MacDonnell  
 Sheriff.....Gerry Oyen  
 Treasurer.....Alta Mae Brown

### BENT COUNTY LEVIES FOR 2010

The code number in the left hand column corresponding with the code number in your tax statement will identify your mill levy

School Dist.	T.A. CODE	COUNTY	CITY	LIBRARY	FIRE	LA-BC	LA-BC FIRE	H-M WILEY	FIRE	SEWD	LAVWCD	BC-LA CEMETERY	BC-PC CEMETERY	TOTAL LEVY	T.A. CODE
RE - 1	1	30.610	23.057	39.000	1.500	4.415				0.947	1.502	2.000		103.031	1
	8	30.610	23.057		1.500	4.415				0.947	1.502	2.000		64.031	8
	9	30.610	23.057		1.500	4.415					1.502	2.000		63.084	9
	14	30.610	23.057		1.500						1.502	2.000		58.669	14
	15	30.610	23.057		1.500		5.500				1.502		2.000	64.169	15
	17	30.610	23.057		1.500		5.500			0.947	1.502		2.000	65.116	17
RE - 2	22	30.610	25.741			4.415					1.502		2.000	64.268	22
	23	30.610	25.741				5.500			0.947	1.502		2.000	66.300	23
	24	30.610	25.741					5.500			1.502	2.000		59.853	24
	25	30.610	25.741				5.500				1.502		2.000	65.353	25
	27	30.610	25.741			4.415				0.947	1.502		2.000	65.215	27
RE-13 J	31	30.610	25.157						2.000	0.947	1.502		2.000	62.216	31
	32	30.610	25.157						2.000		1.502		2.000	61.269	32

Example showing how a total mill levy is developed for the city of Las Animas TA 1

County	School	City	LA-BC Library	Fire Dist.	SEWD	LAVWCD	BC-LA Cemetery	Total
30.610	+ 23.057	+ 39.000	+ 1.500	+ 4.415	+ 0.947	+ 1.502	+ 2.000	= 103.031

To check your tax bill, find your Tax Area "TA" at the top of your legal description. All levies that apply will be listed from left to right above. The total levy on the right will be the dollar amount you should pay for each \$1,000 of assessed valuation.

# BENT COUNTY COLORADO



## ABSTRACT OF ASSESSMENT

AND LEVIES OF TAXES

# 2010

## ASSESSED VALUATION

# \$ 72,466,363

This Abstract is compiled in the office of the

### BENT COUNTY ASSESSOR

And approved by

BENT COUNTY BOARD OF EQUALIZATION,  
 COLORADO PROPERTY TAX ADMINISTRATION &  
 COLORADO STATE BOARD OF EQUALIZATION

Guy Wagner.....County Assessor  
 Rachel Grinstead... ..Admin Clerk  
 Mike Kester ... ..Deputy Assessor/Appraiser  
 Cindy Jones ... ..GIS Tech/ Clerk

Telephone: (719) 456-2010  
 Fax Number: (719) 456-3108  
 725 Bent Avenue