

2009

Abstract of Assessment

PARCELS AVERAGE
OR ACRES PER AC REAL PROPERTY

Residential

Assessment rate 7.96%

1,763	Improved Land	\$ 497,740
	Improvements	\$ 5,443,978
229	Mobile Homes	\$ 134,353
44	Ag Mobile Homes	\$ 26,157
387	Ag Residences	\$ 1,680,354

Assessment rate 29%

473	Vacant Land	\$ 379,535
TOTAL RESIDENTIAL		\$ 8,162,117

Commercial

Assessment rate 29%

23	Vacant Land	\$ 48,506
	Improved Land	\$ 389,864
	Improvements	\$18,756,392

TOTAL COMMERCIAL \$19,194,762

Industrial

Assessment rate 29%

	Improved Land	\$ 15,784
7	Improvements	\$ 196,224

TOTAL INDUSTRIAL \$ 212,008

Agricultural

Assessment rate 29%

60,007	123.45	Irrigated Land	\$ 7,408,080
55,219	14.52	Dry Farm Land	\$ 801,722
686,336	4.44	Grazing Land	\$ 3,046,556
13,416	1.60	Other Lands	\$ 21,516
		Other Ag Land	\$ 49,545
		Farm Support Bldg	\$ 1,049,767
		Other Ag	\$ 4,085,505
		Possessary Interest	\$ 148,182

TOTAL AGRICULTURAL \$16,610,873

TOTAL REAL ESTATE & IMPROVEMENTS ASSESSED \$44,179,760

Natural Resources

333,181	Severed Minerals	\$ 662,631
	Producing Oil & Gas	\$ 2,254,370
	Earth & Stone	\$ 20,839

TOTAL NATURAL RESOURCES \$ 2,937,840

Personal Property Valuation

Assessment rate 29%

Commercial Furniture & Equipment	\$ 988,937
Industrial Furniture & Equipment	\$ 76,508
Agricultural Equipment	\$ 76,160
Oil & Gas Equipment	\$ 116,989
Earth or Stone Equipment	\$ 0
TOTAL PERSONAL	\$ 1,258,594

SUMMARY OF ASSESSED VALUATIONS

Total Real Estate & Improvements Assessed	\$ 44,179,760
Total Natural Resources Assessed	\$ 2,937,840
Total Personal Property Assessed	\$ 1,258,594
Total Assessed Valuation of Public Utilities	\$ 25,251,901

GRAND TOTAL

TAXABLE ASSESSED VALUATION \$ 73,628,095

2009

County General Tax

FUND	VALUATION	LEVY	REVENUE
General Fund	\$ 73,628,095	22.495	\$ 1,656,264
Road & Bridge	"	3.596	\$ 264,767
Public Welfare	"	3.750	\$ 276,105
Contingent	"	0.000	\$ 0
Airport	"	0.019	\$ 1,399
Retirement	"	0.750	\$ 55,221
Abatement	"	0.000	\$ 0
TV Translator	"	0.000	\$ 0

TOTAL COUNTY

LEVY AND REVENUE 30.61 \$ 2,253,756

2009

School Tax And Levies By District

DISTRICT	VALUATION	LEVY	REVENUE
RE - 1	\$ 51,664,275	23.116	\$ 1,194,271
RE - 2	\$ 18,073,320	25.877	\$ 467,683
RE - 13 JT	\$ 3,890,500	25.053	\$ 97,469

TOTAL VALUATION

\$73,628,095

TOTAL SCHOOL REVENUE \$ 1,759,423

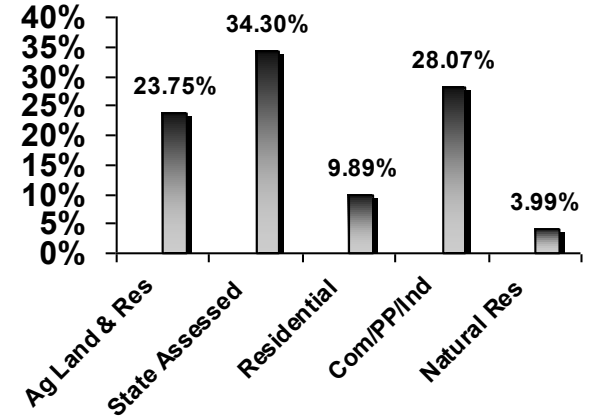
REQUIRED SCHOOL DISTRICT INFORMATION ON SENATE BILL 25 FOR GENERAL FUND ONLY

(Mill levy with state revenue available)					
RE - 1	23.116	RE - 2	25.877	RE - 13 JT	25.053
(Estimated mill levy, if no state revenue available)					
RE - 1	81.430	RE - 2	133.690	RE - 13 JT	206.177

2009 CITY TAX

	VALUATION	LEVY	REVENUE
City of Las Animas	\$ 6,119,811	39.000	\$ 238,673
TOTAL CITY			
LEVY AND REVENUE		39.000	\$ 238,673

WHERE PROPERTY TAX VALUE COMES FROM

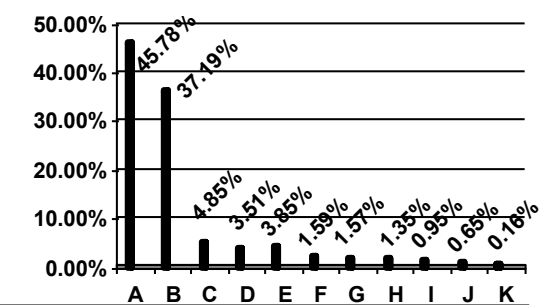


SPECIAL DISTRICTS

LA - BC Fire	\$42,958,978	4.415	\$ 189,664
Hasty McClave Fire	\$12,122,935	5.500	\$ 66,676
Wiley Rural Fire	\$ 3,857,167	2.000	\$ 7,714
LA - BC Library	\$51,664,275	1.500	\$ 77,496
BC-PC Cemetery	\$16,042,685	2.000	\$ 32,085
BC - LA Cemetery	\$57,589,102	3.000	\$ 172,767
Lower Arkansas Valley			
Water Conservancy	\$52,140,873	1.502	\$ 78,316
Southeastern Colorado			
Water Conservancy	\$49,726,629	0.940	\$ 46,743

TOTAL SPECIAL DISTRICTS REVENUE \$ 671,462

DISTRIBUTION OF PROPERTY TAX REVENUE



District	Revenue
A Bent county	45.78%
B Schools	35.74%
C City of Las Animas	4.85%
D Bent Las Animas Cemetery	3.51%
E Las Animas Bent County Fire	3.85%
F Lower Ark. Valley Water Conservanc	1.59%
G Las Animas Bent County Library	1.57%
H Hasty-Mc Clave fire	1.35%
I Southeastern Water Conservancy	0.95%
J Bent Prowers Cemetery	0.65%
K Wiley Rural Fire	0.16%

ASSESSMENT INFORMATION

The County Assessor does not set the tax levies. County tax is levied by the Board of County Commissioners. School tax is levied by the School Boards. City tax is levied by the City Officials. Special District tax is levied by their Board of Directors.

After the levies are received by this office, it is the duty of the Assessor to extend the taxes upon property as assessed, and then certify and deliver the tax roll to the County Treasurer for collection according to the law.

All property, except that specifically exempted by law, is subject to taxation, and it is the responsibility of the owner to see that it is listed with the assessor.

If you have questions or problems with your valuation, please come by or call. This office is here to serve you.

Guy Wagner, Bent County Assessor

TAX INFORMATION

Taxes are due January 1st each year. Make all checks payable to Bent County Treasurer.

Taxes may be paid in full or in two equal payments. The first half payment is due no later than the last day of February. The second half payment is due no later than the 15th day of June. If you pay your taxes in one payment, the total is due no later than the last day of April, and no interest penalty will accrue on any portion of the taxes.

Any tax less than \$25.00 must be paid in full, in one single payment.

Alta Mae Brown, Bent County Treasurer

BENT COUNTY OFFICERS 2009

Assessor.....Guy Wagner
 Clerk & Recorder.....Patti Nickell
 Commissioner-District 1.....William Long
 Commissioner-District 2.....Tom Wallace
 Commissioner-District 3.....Lynden Gill
 Coroner.....David Roberts
 County Judge.....Mark MacDonnell
 Sheriff.....Gerry Oyen
 Treasurer.....Alta Mae Brown

BENT COUNTY LEVIES FOR 2009

The code number in the left hand column corresponding with the code number in your tax statement will identify your mill levy

School Dist.	T.A. CODE	COUNTY	SCHOOL	CITY	LIBRARY	LA-BC FIRE	LA-BC FIRE	H-M WILEY FIRE	SEWD	LAVWCD	BC-LA CEMETERY	BC-PC CEMETERY	TOTAL LEVY	T.A. CODE
RE-1	1	30.610	23.116	39.000	1.500	4.415			0.940	1.502	3.000		104.083	1
	8	30.610	23.116		1.500	4.415			0.940	1.502	3.000		65.083	8
	9	30.610	23.116		1.500	4.415				1.502	3.000		64.143	9
	14	30.610	23.116		1.500					1.502	3.000		59.728	14
	15	30.610	23.116		1.500		5.500			1.502		2.000	64.228	15
	17	30.610	23.116		1.500		5.500		0.940	1.502		2.000	65.168	17
RE-2	22	30.610	25.877			4.415				1.502		2.000	64.404	22
	23	30.610	25.877				5.500		0.940	1.502		2.000	66.429	23
	24	30.610	25.877							1.502	3.000		60.989	24
	25	30.610	25.877				5.500			1.502		2.000	65.489	25
	27	30.610	25.877			4.415			0.940	1.502		2.000	65.344	27
RE-13 JT	31	30.610	25.053					2.000	0.940	1.502		2.000	62.105	31
	32	30.610	25.053					2.000	1.502	1.502		2.000	61.165	32

Example showing how a total mill levy is developed for the city of Las Animas TA 1

County	School	City	Fire Dist.	LA-BC Library	SEWD	LAVWCD	BC-LA Cemetery	Total
30.610	+ 23.116	+ 39.000	+ 4.415	+ 1.500	+ 0.940	+ 1.502	+ 3.000	= 104.063

To check your tax bill, find your Tax Area "TA" at the top of your legal description. All levies that apply will be listed from left to right above. The total levy on the right will be the dollar amount you should pay for each \$1,000 of assessed valuation.

BENT COUNTY COLORADO



ABSTRACT OF ASSESSMENT

AND LEVIES OF TAXES

2009

ASSESSED VALUATION

\$ 73,628,095

This Abstract is compiled in the office of the

BENT COUNTY ASSESSOR

And approved by

BENT COUNTY BOARD OF EQUALIZATION,
 COLORADO PROPERTY TAX ADMINISTRATION &
 COLORADO STATE BOARD OF EQUALIZATION

Guy Wagner.....County Assessor
 Rachel Grinstead.....Admin Clerk
 Mike Kester.....Appraiser
 Cindy Jones.....Clerk

Telephone: (719) 456-2010
 Fax Number: (719) 456-3108
 725 Bent Avenue
 Las Animas, Colorado 81054
 E-mail bentassessor@bentcounty.net